



100% Electric

This is the only home we have



Pollution is an escalating global crisis, affecting both the environment around us and the quality of life for everyone. Its far-reaching consequences remind us daily of the urgent need for sustainable solutions.

For over 15 years, Tenax North America has been driven by this awareness, fostering innovation in the design and manufacture of eco-friendly, 100% electric street cleaning machines. Our mission is to provide technical solutions that not only address today's challenges but also help protect the future of our planet.

At Tenax, we are committed to safeguarding the Earth—our unique and irreplaceable home—for current and future generations.



## E as ENVIRONMENTALLY FRIENDLY

Tenax North America embraces the “e” philosophy at every level of its operations, integrating eco-consciousness into every aspect of its business. With 35 years of expertise in street sweeping, Tenax continually leverages cutting-edge technologies to provide customers with a full range of highly effective, zero-emission solutions. In fact, as early as 2003, Tenax pioneered the world’s first fully electric street sweeper, setting a new standard in environmentally friendly urban cleaning.



## E as ETHICAL

Tenax North America minimizes its environmental footprint by producing without pollution, thanks to its 50 kW photovoltaic plant. Strategically located in Italy’s Motor Valley, the heart of the automotive industry, Tenax sources the highest-quality components locally, ensuring both sustainability and excellence in every product.



## E as EQUAL

At Tenax North America, all processes are optimized through Lean manufacturing principles and continuously refined using Kaizen methodologies. This commitment ensures not only the highest product quality but also an exceptional working environment for our collaborators. Our operations are fully aligned with ISO 9001 and 14001 certifications, guaranteeing strict adherence to quality and environmental standards. Even at the end of their lifecycle, Tenax products maintain a strong focus on eco-sustainability, with up to 90% of components being fully recyclable.



Tenax North America is an Italian company, and the world's first to specialize in the design and production of low-voltage, fully 100% electric road sweepers and street washers.

With over 35 years of experience, unmatched technical expertise, and more than 700 machines sold across 42 countries on five continents, we lead the way in developing cutting-edge, clean energy-powered machinery.





ecology  
efficiency  
economy

- SAFE 24/48 VOLT SYSTEM
- 100% ELECTRIC
- ZERO EMISSIONS
- RECYCLABLE UP TO 92%
- SILENT
- PLUG & PLAY - POWERED BY GEL, LEAD ACID OR LITHIUM BATTERIES
- RECHARGEABLE EVERYWHERE
- 8 - 10 HOURS OF AUTONOMY
- RELIABLE AND POWERFUL
- INTUITIVE
- MINIMUM MAINTENANCE AND AUTO-DIAGNOSIS
- \$4.52 AVERAGE CHARGING COST



Map voltages

- 220 - 240V / 50Hz
- 220 - 240V / 60Hz
- 100 - 127V / 60Hz
- 100 - 127V / 50Hz



## the value of “e” philosophy



The set of choices and behaviors that generate the “e” philosophy enables Tenax to offer concrete and effective zero-impact cleaning solutions that improve the quality of life of users and citizens, while respecting the basic needs of our public and private customers, in terms of efficiency and economy.

### The advantages are numerous and surprising:



Elimination of CO2 emissions to reduce global pollution



Improve the quality of life of both the operator and the citizen



Reduction of over 30% of sound emissions



Improvement of urban environment



Simplicity of use and driving comfort



Ease of maintenance, thanks to self-diagnostics and the possibility of remote monitoring



No risk of leakage of hydraulic oil



Save more than 70% of maintenance costs



Save more than 90% of fuel costs (diesel or gasoline)



Reduction of Total Cost of Ownership (TCO), which allows a quick amortization of the investment

# maxwind

The Tenax MaxWind is the world's first and only fully electric compact sidewalk sweeper. With its harmonious design, ergonomic features, and outstanding performance, it offers a quiet and efficient cleaning solution for city centers, pedestrian areas, cycle paths, and various indoor and outdoor small to medium-sized environments. Safe and intelligent, the Tenax MaxWind enhances the quality of life for both citizens and operators alike.



## DIMENSIONS

Length without chariot	6' 4.4"
Length with standard chariot	8' 2"
Length with two wheeled chariot	9' 5.4"
Width	3' 3"
Height	3' 6.5"
Steering radius without chariot	3' 6.3"

## WEIGHTS

Weight standard chariot	41 lb
Weight two wheeled chariot	114 lb
Weight with AGM batteries 240 Ah	985 lb
Weight with AGM batteries 320 Ah	1,117 lb
Weight with lithium batteries 150 Ah	835 lb
Weight with Lead Acid batteries 240 Ah	985 lb

## TRACTION

Electric traction w/ differential gearbox	800 W
Traction engine	900 W
Fan/suction engine	800 W
90Right side brush gear motor	90 W
Left side brush motoreductors	90 W

## AUTONOMY

6/8 hours	
AGM batteries 240 Ah	24 V
AGM batteries 320 Ah	24 V
Lithium batteries 180 Ah	24 V
Lithium batteries 240 Ah	24 V
Lithium batteries 320 Ah	24 V

## BRAKING SYSTEM

Electric brake on electric motor

## TIRES

15" x 3" front run-flat tires  
9" x 2.5" rear run-flat tires

## SUSPENSIONS

On rear pivoting wheels

## WASTE HOPPER

Hopper capacity 24.2 -26.4 G  
Waste collection with standard plastic bag

## DUST CONTROL SYSTEM

PM10 dust suction Filter Surface 43.05 ft<sup>2</sup>  
Electric filter shaker  
2 nozzles on front side brushes  
Water tank capacity 3.3 G  
Additional water tank 4.83 G

## PERFORMANCES

Speed 0 - 5 mph  
Working climbing ability 20%  
Hourly efficiency 107.639 - 113.667 ft<sup>2</sup> /h  
Central brush sweeping width 23.6"  
Sweeping width w/ side brushes 49" - 52"  
Suction hose 9' 10" - 4.72" D.

# Smartwind

In summary, the Tenax SmartWind street sweeper is a groundbreaking, 100% electric solution designed for both streets and sidewalks, featuring a high dump capability. Equipped with an innovative “steer-by-wire” motion system controlled by a joystick, it offers a safe and user-friendly experience. Ideal for indoor and outdoor cleaning in small to medium-sized areas, the SmartWind is both eco-friendly and versatile. As the only ride-on sweeper of its kind, it enhances the quality of life for both citizens and operators by completely eliminating CO2 emissions and reducing noise emissions by 40%.



## DIMENSIONS

Length	6' 4.4"
Width	4' 6.7"
Height with cabin	6' 10.3"
Steering radius	5'

## WEIGHTS

Weight with AGM batteries 400 Ah	1,706 lb
Weight with lithium batteries 320 Ah	1,435 lb
Weight with Lead Acid batteries 320 Ah	1,494 lb

## TRACTION

3.050 W electric traction with 2 electric gear motors and asynchronous motor

## AUTONOMY

	8 hours
AGM Batteries	24 V - 400 Ah
Lithium batteries	24 V - 320 Ah

## BRAKING SYSTEM

Electric brake on electric motor

## TIRES

Front	20.3" x 4.7"
Rear	9.84" x 3.3"

## SUSPENSIONS

On rear pivoting wheels

## WASTE HOPPER

Hopper capacity	46 G
Waste collection with standard plastic bag	
High rear dumping	5' 1.8"

## DUST CONTROL

PM10 dust suction filter surface	43 ft <sup>2</sup>
Electric filter shaker	
2 nozzles on front side brushes	
Water tank capacity	11 G

## PERFORMANCES

Speed	0 - 6 mph
Working climbing ability	22%
Hourly efficiency	150.695 ft <sup>2</sup> /h
Central brush sweeping width	1' 11.6"
Sweeping width with side brushes	4' 7"
Suction hose	9' 10" - 4.72" D.

# maxwind hydro

MaxWind hydro is the world's first and only fully electric compact sidewalk sweeper. With its harmonious design, ergonomic features, and outstanding performance, it offers a quiet and efficient cleaning solution for city centers, pedestrian areas, cycle paths, and various indoor and outdoor small to medium-sized environments. Safe and intelligent, the MaxWind hydro enhances the quality of life for both citizens and operators alike.



5 nozzles front washing bar



Variable fan nozzle



Rotating nozzle



Washing lance with adjustable pressure 725 - 1,450 psi





Forward and reverse adjustable traction handle complete with speed control and integrated tool box



On board battery charger (OPT)



2 x 23 G water tanks



1 G disinfectant tank



## DIMENSIONS

Length without chariot	5' 11.3"
Length with two wheeled chariot	8' 11.68"
Width	2' 11.43"
Height	3' 4.31"
Steering range (without chariot)	4' 1.21"

## WEIGHTS

Empty weight without batteries	573 lb
Empty weight with AGM batteries 4 x 6 V 240 Ah	855 lb

## TRACTION

Traction engine	1.940 W
Water pump engine	3.050 W

## AUTONOMY

	6/8 hours
AGM Batteries 4 x 6 V	24 V - 240 Ah
AGM Batteries (on request)	24 V - 320 Ah
Lithium batteries (on request)	24 V - 150 Ah
Lead acid batteries (on request)	24 V - 260 Ah

## BRAKING SYSTEM

Electric brake on electric motor

## TIRES

Front run-flat tires	15" x 3.5"
Rear run-flat tires	9" x 2.8"

## SUSPENSIONS

On rear pivoting wheels

## WATER TANK

Capacity	2 x 23.09 G
Disinfectant tank	1.09 G

## PERFORMANCES

Speed	0 - 5 mph
Working climbing ability	20%
Hourly efficiency	77,500 ft <sup>2</sup> /h
Washing width with front washing bar	2' 11.43"

# Electra<sup>1.0</sup>

The Electra 1.0 is the world's first and only fully electric compact street sweeper. With its harmonious design, ergonomic features, and outstanding performance, it offers a quiet and efficient cleaning solution for city centers, pedestrian areas, cycle paths, and various indoor and outdoor small to medium-sized environments. Safe and intelligent, the Electra 1.0 enhances the quality of life for both citizens and operators alike.



Removable DIN waste container of 79 G



Removable DIN waste container of 53 G



Fiberglass tilting body



2 steering wheels



Side roll bars



Quick battery-replacement system



PM10 polyester filter for dust control system with electric filter shaker



Suction hose



**DIMENSIONS**

Length	9' 9.71"
Width	3' 4.55"
Height without rotating beacon	6' 2.80"
Wheel base	4' 10.26"

**WEIGHT**

Empty weight	3968 lb
Total weight	4,739 lb
Loading capacity	772 lb

**TRACTION**

With electric motors on rear wheels  
 Motor type: asynchronous alternate current  
 Motor power: 18.2 kW on continuous duty  
 Electronic control by inverter with regeneration during braking and torque control

**WORKING AUTONOMY** 8/9 hours

Lead acid batteries type "waterless" 48 V, 620 Ah  
 Lead acid batteries type "Ironclad Air Mix" 48 V, 688 Ah  
 Lead acid batteries type "nexsys" 48 V, 560 Ah

**STEERING SYSTEM**

Electric on the 2 front wheels

**BRAKING SYSTEM/WHEELS**

Foot drum brakes on 4 wheels  
 Electro-mechanical negative parking brake on rear wheels  
 Tires 5 - 10"

**SUSPENSIONS**

Independent on 4 wheels: front with traverse leaf spring interconnected rear suspensions with polyurethane shock absorbers

**DUST CONTROL**

2 spraying nozzles on brushes  
 Stainless steel water tank cap. 22 G  
 PM10 polyester filter with electric filter shaker

**WASTE HOPPER**

Removable DIN waste container cap. 79 G  
 Removable DIN waste container cap.(opt) 53 G  
 4' 7" high rear dumping through the smart tipper system

**PERFORMANCES**

Maximum speed	0 - 10.6mph
Work climbing ability	35%
Hourly efficiency	161,458 ft <sup>2</sup> /h
Sweeping width with 2 brushes	4' 11.05"
Suction hose (Opt)	9' 10.11" – 3.54 D

# Electra<sup>+</sup>

## 2.0 evos

Electra 2.0 Evos is constructed using high-quality materials and components, with a particular focus on weight distribution. This design maximizes capacity while allowing customers to choose the battery type that best suits their needs—be it Acid, Gel, or Lithium. Furthermore, all functions of the sweepers are powered exclusively by electric motors, eliminating the inefficiencies and vulnerabilities associated with traditional hydraulic systems.

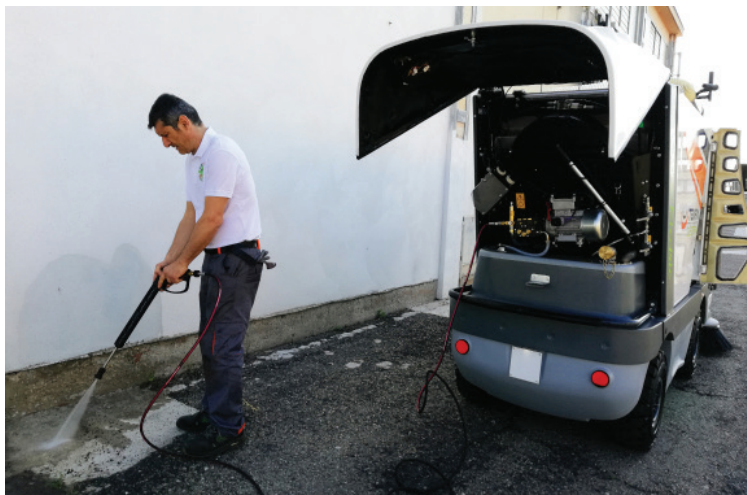


New LED headlight:



Manual and automatic independent “turn & follow” movement of brushes controlled by joystick

High pressure cleaning unit



Aluminum tilting cab

New intuitive and programmable console with standard self-diagnosis



High rear dumping



Full-electric third brush



4 steering wheels on working mode

**DIMENSIONS**

Length	12' 6.39"
Length with third brush	14' 0.5"
Width	3' 11.24"
Height without rotation beacon	6' 6.74"
Wheel base	5' 6.14"

**WEIGHT**

	Lithium	Acid "Waterless"
Empty weight	5,291 lb	6,724 lb
Total weight	9,480 lb	9,480 lb
Loading capacity	4,189 lb	2,756 lb

**TRACTION**

With electric motors on rear wheels  
 Motors type: asynchronous alternate current  
 Motors power: 38 kW on continuous duty  
 Electronic control by inverter with regeneration during braking and torque control

**WORKING AUTONOMY**

	8/10 hours
Lead acid type "waterless" or lithium batteries	48 V, 1000 Ah
Lead acid batteries type "IRONCLAD® Air Mix"	48 V, 1104 Ah
Lead acid batteries type "Nexsys"	48 V, 875 Ah

**STEERING SYSTEM**

Electric on 4 wheels

**BRAKING SYSTEM/WHEELS**

Foot brakes on 4 wheels  
 Front drum brakes - rear oil disc brakes  
 Electro-mechanical parking brake on rear wheels  
 Tires 6.50 - 10" - 12 PR

**SUSPENSION**

Independent hydraulic on 4 wheels

**DUST CONTROL**

2 spraying nozzles on brushes  
 Spraying nozzles on mouth and suction hose  
 Water tank cap. 88 G

**WASTE HOPPER**

Stainless steel cap. 440 G - high rear dumping

**PERFORMANCES**

Speed	0 - 15.53 (STD) mph
	0 - 20 (OPT) mph
Work climbing ability	35%
Hourly efficiency	273,403 ft <sup>2</sup> /h
Sweeping width	
with independent brushes	6' 2.8" - 7' 5.37"
Sweeping width with third brush	8' 4"

# Electra<sup>2.0</sup> hydro

The Tenax Electra 2.0 is the world's first and only fully electric compact street sweeper. With its harmonious design, ergonomic features, and outstanding performance, it offers a quiet and efficient cleaning solution for city centers, pedestrian areas, cycle paths, and various indoor and outdoor small to medium-sized environments. Safe and intelligent, the Tenax Electra 2.0 enhances the quality of life for both citizens and operators alike.



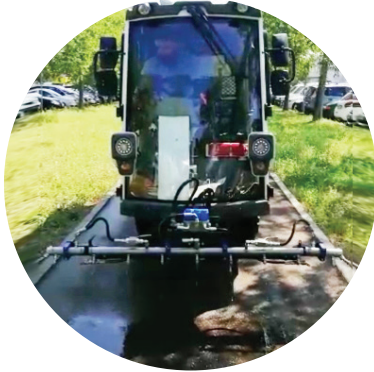
Intuitive and programmable console with standard self-diagnosis



4 steering wheels on working mode



360° high pressure washing rotating arm with 32.9' hose



Front washing bar with pump  
11 G/min - 507 psi or  
4.6 G/min - 870 psi



High pressure cleaning unit



Joystick for the manual control of the front washing bar

**DIMENSIONS**

Length	13' 5.41"
Width	4' 5.14"
Height including washing arm	7' 2.61"
Wheel base	5' 6.14"

**WEIGHT**

	Lithium	Acid
Empty weight	5,070 lb	6062 lb
Total weight	8,487 lb	9,479 lb
Loading cap.	3,417 lb	3,417 lb

**TRACTION**

With electric motors on rear wheels  
Motor type: asynchronous alternate current  
Motor power: 38 kW on continuous duty  
Electronic control by inverter with regeneration during braking and torque control

**WORKING AUTONOMY**

Lithium batteries 48 V	8/10 hours
Lead acid batteries type "IRONCLAD® Air Mix"	1000 Ah
Lead acid batteries type "Nexsys" 48 V	48 V 828 Ah
	750 Ah

**STEERING SYSTEM**

Electric on 4 wheels

**BRAKING SYSTEM/WHEELS**

Foot brakes on 4 wheels  
Front drum brakes - rear oil disc brakes  
Electro-mechanical negative parking brake on rear wheels  
Tires 6.50 - 10"

**SUSPENSION**

Hydraulic on 4 wheels

**HIGH WASHING SYSTEM**

Clean water tank cap. 341 G  
High pressure pump performances: 11 gallons/minute - 507 PSI or 4.6 gallons/minute - 870 PSI

**PERFORMANCES**

Maximum speed	0 - 15.5 mph
Work climbing ability	35%
Hourly efficiency	327,222 ft <sup>2</sup> /h
Standard washing rig width	4' 5.14"
Maximum washing width with standard rig	4' 10.26"
Washing open reusable rig width	5' 11.92"
Maximum washing width with resealable rig (in open mode)	7' 10.48"
Maximum washing width with extensible rig	9' 11.7"

# Winter equipment for

Electra<sup>®</sup>  
2.0 evos  
Electra<sup>®</sup>  
2.0 hydro

The Electra 2.0 Evos electric sweeper and the Electra 2.0 hydro electric street washer can be equipped with the 33 G electric salt spreader, installed on the rear part of the machine. The salt spreader, managed by a special control in the cabin, can be easily refilled at any time.



The salt spreading system is easily installable and removable, allowing for seasonal adjustments and perfect customization to meet the customer's needs.

The 33 G salt spreader system is managed by a specific control panel placed inside the cabin on the top-end above the passenger seat. According to the specific needs and the vehicle speed, it is possible to adjust the quantity of material as well as the spreading distance.

Control panel fitted in the cabin





# Winter equipment for

Electra<sup>®</sup>  
2.0 evos

Electra<sup>®</sup>  
2.0 hydro

The Electra 2.0 Evos electric sweeper and the Electra 2.0 hydroelectric street washer can be fitted with either a 5' 3" snow plow or a 4' 7" (13" diameter) snow rotating broom, which can be easily installed at the front of the machine in place of the washing bar. This allows for efficient snow removal and road clearing. The snow plow is operated using a dedicated control within the cabin for convenient adjustment.



The electric snow plow system is managed by a specific joystick placed inside the cabin.

The 5' 3" snow plow fitted with anti-shock system.



The Tenax Group offers an extensive selection of 100% electric sweepers that can be customized with a modular range of batteries and chargers, delivering the most energy-efficient solutions tailored to our customers' needs.

the energy supply for each road sweeper, adapting to the diverse environmental challenges faced by our customers every day.

As the world's first company to provide a complete lineup of 100% electric sweepers, Tenax is uniquely positioned to fully customize



Tenax's 100% electric sweepers are designed to enable operators to complete a full work shift with ease. Equipped with either LiFePO4 lithium-ion batteries or IRONCLAD® Air Mix lead-acid batteries, these sweepers offer over 10 hours of operational autonomy\*.



Tenax's 100% electric sweepers are equipped with batteries designed for longevity, offering an estimated lifespan of up to 1,560 cycles (at 60% Depth of Discharge) with AGM (TPPL, Thin Plate Pure Lead) NexSys® batteries, and up to 3,500 cycles with LiFePO4 lithium-ion batteries. This lifespan translates to an average operational life of 3 to 8 years.



Tenax's 100% electric sweepers feature batteries that can be recharged indoors (LiFePO4 - NexSys®) or in well-ventilated areas (Waterless® - IRONCLAD® Air Mix). They support recharging with either 110 V-220 V single-phase or 220 V-400 V three-phase power using single or double chargers. Charging times range from 3 to 12 hours, depending on the setup.



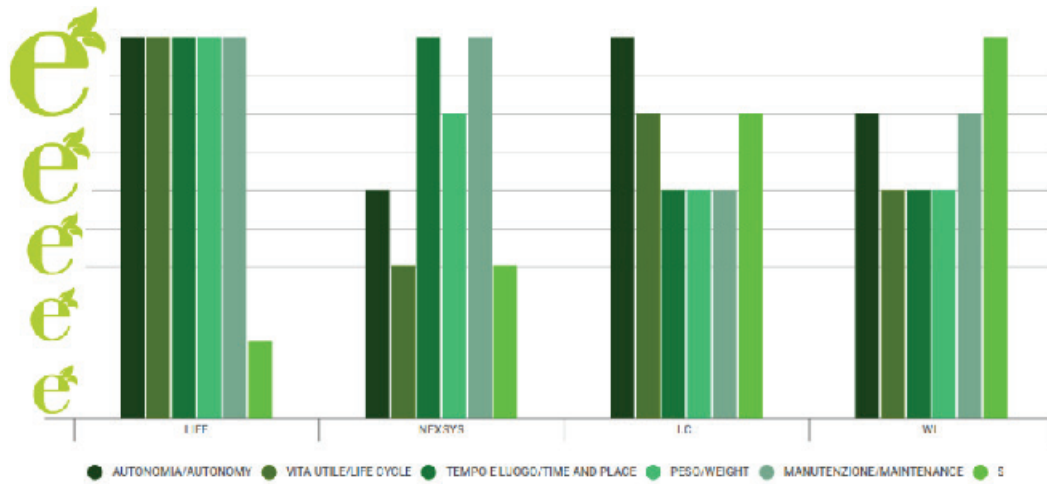
The Tenax 100% electric sweepers are equipped with batteries that are perfectly aligned with our customers' budgets and expected depreciation periods, enabling significant cost savings based on their performance needs. Additionally, Tenax's "plug & play" energy solutions allow for local battery type changes throughout the sweeper's useful life, providing flexibility and adaptability.



The Tenax 100% electric sweepers feature low-maintenance sealed batteries (LiFePO4 - NexSys®) or batteries with maintenance intervals ranging from every 3 weeks (IRONCLAD® Air Mix) to every 8 weeks (Waterless®). Additionally, all Tenax electric sweepers are equipped with centralized electrolyte charging systems and intelligent battery chargers that continuously monitor battery health and performance.



Tenax 100% electric sweepers are available for rental with options for Acid-Lead and AGM (TPPL, Thin Plate Pure Lead) batteries. Rental periods range from 36 to 60 months. For a customized solution tailored to your needs, please contact your nearest authorized Tenax dealer.



This sealed, maintenance-free battery is lightweight and can be quickly and frequently recharged in various environments. It boasts a minimum lifespan of 3,500 cycles and comes with a 36-month warranty, providing an impressive autonomy of up to 10 hours\*. (Compatible with Electra 2.0 Neo and Hydro models.)



This AGM (TPPL, Thin Plate Pure Lead) sealed battery requires no water topping up and can be quickly and frequently recharged in various environments. It offers 1,560 cycles (at 60% Depth of Discharge) and comes with a 24-month warranty, providing an autonomy of up to 8 hours\*. (Compatible with Electra 1.0, Electra 2.0 Neo, and Hydro models.)



This lead-acid battery features a high-capacity positive square plate and is designed as an open vented battery, requiring scheduled maintenance every 3 weeks. It can be recharged in standard mode within a ventilated environment. The battery boasts a minimum expected lifespan of 1,800 cycles and comes with a 36-month warranty, providing an autonomy of up to 10 hours\*. (Compatible with Electra 1.0, Electra 2.0 Neo, and Hydro models.)



This open-vented battery requires scheduled maintenance every 8 weeks. It can be recharged in standard mode and in a ventilated environment, offering an expected lifespan of 1,500 cycles and a 36-month warranty.

\*The autonomy of the sweeper is calculated on the standard sweeping shift with a temperature of 77 °F. The data may vary according to the slopes and to the working speed of the brushes and the suction turbine.

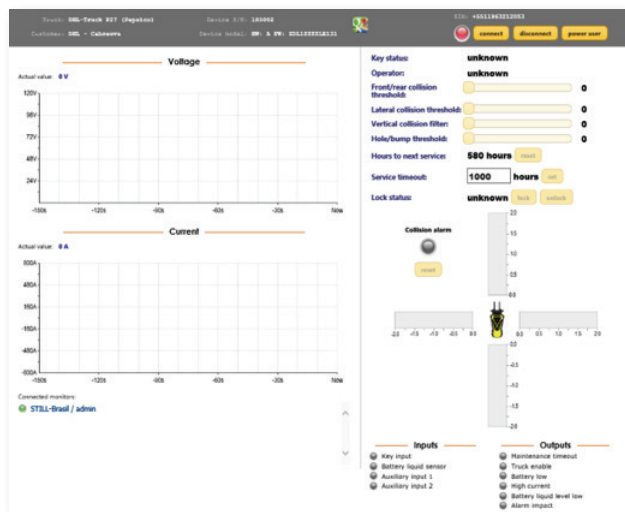
(E) Solutions	LiFeP04	NexSys	Iron Clad	Waterless
Model	MW, SW, E2E, E2H	MW, SW, E1, E2E, E2H	E1, E2E, E2H	MW, SW, E1, E2E, E2H
Ah	150/320/1000/1000	240/320/560/875/875	688/1104/828	240/ 320/ 620/ 1000/1000
Weight	1,322	1,973/2,888	2,138/3,108/2,403	2,072/3,042
Autonomy	6 , 8, 10, 10	8, 8, 7, 8, 8	9, 10, 10	8, 8, 8, 9,9
Partial charge	YES	YES	NOT FREQUENT	NOT FREQUENT
Life cycles	3,000	1,560	1,800	1,500
Fast charge	3	3.5	5.5	5.5
Standard charge	6	5	7	7
Maintenance	NONE	NONE	3 WEEKS	8 WEEKS
Warranty	36	24	36	36
Rent	YES*	YES	YES	YES
Price	\$\$\$\$\$	\$\$\$	\$\$	\$

CHARGERS	LiFeP04	NexSys	Iron Clad	Waterless
220 V	YES	YES	YES	YES
220 + 220 V	YES	NO	NO	NO
400 V	YES	YES	YES	YES
400 V fast	YES	NO	NO	NO
110 V (USA)	YES	YES	YES	YES
50/60 Hertz (USA)	YES	YES	YES	YES

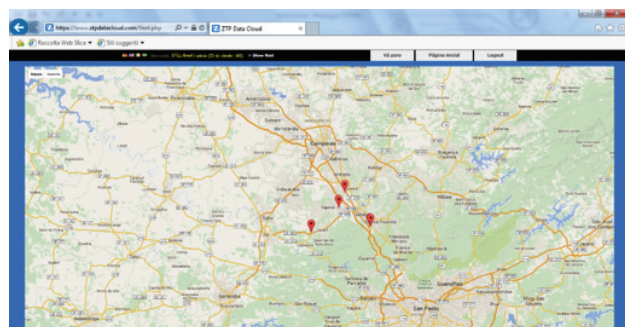
\* In specific countries

# TENAXlink

Tenax Link is the cutting-edge remote monitoring system designed specifically for Tenax's 100% electric sweepers. This software, developed exclusively for our sweepers, utilizes multiple integrated sensors and CAN communication to provide real-time monitoring of usage, functionality, and maintenance status.



Tenax Link directly connects with the Tenax operations center and can be accessed in the cloud with default access levels for authorized Tenax workshops and end customers via WiFi or GPRS.

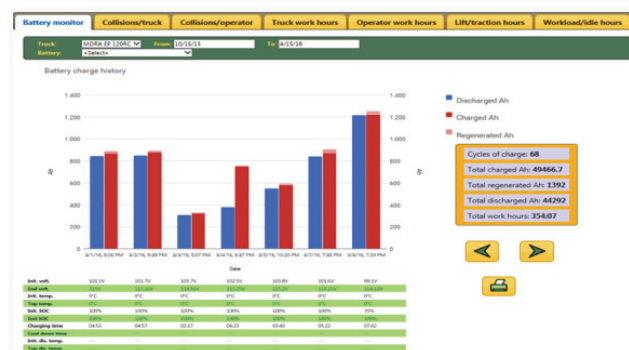
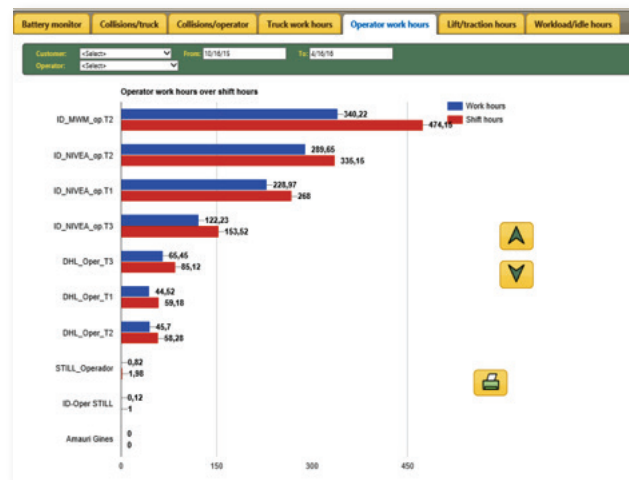


Truck	State	Customer	Operator	Date / Time	Value
Product1_Robotics01	offline alarm	CGA0 8490 - 12 Jumbo	Antonio Olvera	Apr 16, 2016, 11:42:33 AM GMT+02:00	Actual battery V: 90.7 / Voltage battery V: 81.31 / 81.08
Product1_Robotics02	online charge	CGA0 8490 - 12 Jumbo	Carla Torral	Apr 16, 2016, 12:03:50 PM GMT+02:00	
Product1_Robotics03	offline alarm vehicle	CGA0 8490 - 12 Jumbo	Antonio Olvera	Apr 16, 2016, 12:04:37 PM GMT+02:00	1.00 (Threshold: 1.40)
Product1_Robotics04	offline alarm vehicle	CGA0 8490 - 12 Jumbo	Antonio Olvera	Apr 16, 2016, 12:04:38 PM GMT+02:00	1.00 (Threshold: 1.40)
Product1_Robotics05	offline alarm vehicle	CGA0 8490 - 12 Jumbo	Antonio Olvera	Apr 16, 2016, 12:04:39 PM GMT+02:00	1.00 (Threshold: 1.40)
Product1_Robotics06	offline alarm vehicle	CGA0 8490 - 12 Jumbo	Antonio Olvera	Apr 16, 2016, 12:04:40 PM GMT+02:00	1.00 (Threshold: 1.40)
Product1_Robotics07	offline alarm vehicle	CGA0 8490 - 12 Jumbo	Antonio Olvera	Apr 16, 2016, 12:04:41 PM GMT+02:00	1.00 (Threshold: 1.40)
Product1_Robotics08	offline alarm vehicle	CGA0 8490 - 12 Jumbo	Antonio Olvera	Apr 16, 2016, 12:04:42 PM GMT+02:00	1.00 (Threshold: 1.40)
Product1_Robotics09	offline alarm vehicle	CGA0 8490 - 12 Jumbo	Antonio Olvera	Apr 16, 2016, 12:04:43 PM GMT+02:00	1.00 (Threshold: 1.40)
Product1_Robotics10	offline alarm vehicle	CGA0 8490 - 12 Jumbo	Antonio Olvera	Apr 16, 2016, 12:04:44 PM GMT+02:00	1.00 (Threshold: 1.40)
Product1_Robotics11	offline alarm vehicle	CGA0 8490 - 12 Jumbo	Antonio Olvera	Apr 16, 2016, 12:04:45 PM GMT+02:00	1.00 (Threshold: 1.40)
Product1_Robotics12	offline alarm vehicle	CGA0 8490 - 12 Jumbo	Antonio Olvera	Apr 16, 2016, 12:04:46 PM GMT+02:00	1.00 (Threshold: 1.40)
Product1_Robotics13	offline alarm vehicle	CGA0 8490 - 12 Jumbo	Antonio Olvera	Apr 16, 2016, 12:04:47 PM GMT+02:00	1.00 (Threshold: 1.40)
Product1_Robotics14	offline alarm vehicle	CGA0 8490 - 12 Jumbo	Antonio Olvera	Apr 16, 2016, 12:04:48 PM GMT+02:00	1.00 (Threshold: 1.40)
Product1_Robotics15	offline alarm vehicle	CGA0 8490 - 12 Jumbo	Antonio Olvera	Apr 16, 2016, 12:04:49 PM GMT+02:00	1.00 (Threshold: 1.40)
Product1_Robotics16	offline alarm vehicle	CGA0 8490 - 12 Jumbo	Antonio Olvera	Apr 16, 2016, 12:04:50 PM GMT+02:00	1.00 (Threshold: 1.40)
Product1_Robotics17	offline alarm vehicle	CGA0 8490 - 12 Jumbo	Antonio Olvera	Apr 16, 2016, 12:04:51 PM GMT+02:00	1.00 (Threshold: 1.40)
Product1_Robotics18	offline alarm vehicle	CGA0 8490 - 12 Jumbo	Antonio Olvera	Apr 16, 2016, 12:04:52 PM GMT+02:00	1.00 (Threshold: 1.40)
Product1_Robotics19	offline alarm vehicle	CGA0 8490 - 12 Jumbo	Antonio Olvera	Apr 16, 2016, 12:04:53 PM GMT+02:00	1.00 (Threshold: 1.40)
Product1_Robotics20	offline alarm vehicle	CGA0 8490 - 12 Jumbo	Antonio Olvera	Apr 16, 2016, 12:04:54 PM GMT+02:00	1.00 (Threshold: 1.40)

Key features of Tenax Link include continuous monitoring and recording of the following data:

- **Battery Status:** Monitors charge levels, maintenance needs, and identifies malfunctions of individual battery components.
- **Energy Absorption and Regeneration:** Tracks motor functionality and peak energy absorption.
- **Impact Tracking:** Records impacts categorized by intensity and operator (optional).
- **Alarm System:** Enables remote identification of operational anomalies.
- **Usage and Operator Tracking:** Utilizes a special badge system to recognize individual operators, ensuring compliance with anti-terrorism standards while recording work shifts and usage timing.
- **Geolocation:** Employs GPS to provide real-time updates on the sweeper's location.
- **Work Statistics:** Gathers data on user activity, sweeping hours, transfer hours, distance traveled, and maximum speed reached.

With Tenax Link, operators can ensure optimal performance and maintenance of their electric sweepers, enhancing efficiency and reliability.



In addition to carrying out a real-time control, Tenax Link collects and manages the in "cloud" data and allows the creation of a statistical sample of use of the single machine, the work shift or the entire sweepers fleet.